



2009-2010 GMT Quarterly Report for District (or Undistricted) **District B 1**

GMT: **PEDRO A BOTELLO ORTIZ**

Location: **MEXICO**

GMT CA: **3**

CLUBS

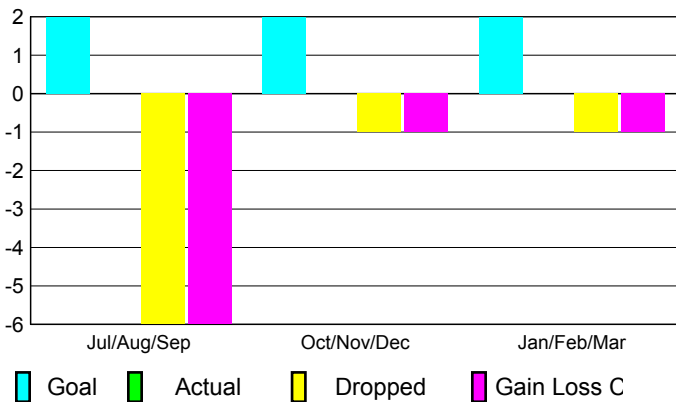
Club Results
2009-2010

Clubs
2008-2009

| Month | New Club | Actual New | Actual Dropped | Gain/Loss of | Gain/Loss of |
|---------------|----------|------------|----------------|--------------|--------------|
| | Goal | New Clubs | Dropped Clubs | Clubs | Clubs |
| Jul/Aug/Sep | 2 | 0 | -6 | -6 | 0 |
| Oct/Nov/Dec | 2 | 0 | -1 | -1 | 0 |
| Jan/Feb/Mar | 2 | 0 | -1 | -1 | 0 |
| Totals | 6 | 0 | -8 | -8 | 0 |

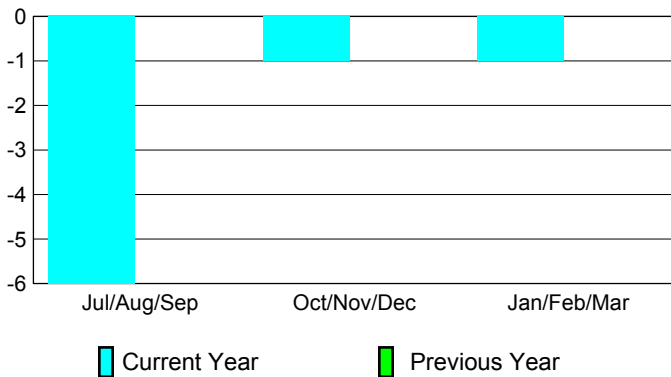
Club Results 2009-2010

Goal, New, Dropped, Gain/Loss



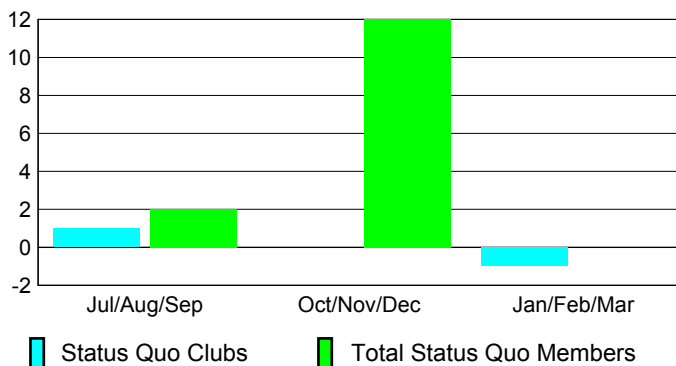
Comparison of Club Gain/Loss

Current Year Compared to the Previous Year



YTD Status Quo Clubs 2009-2010

Status Quo Clubs Compared to Status Quo Members



MEMBERSHIP

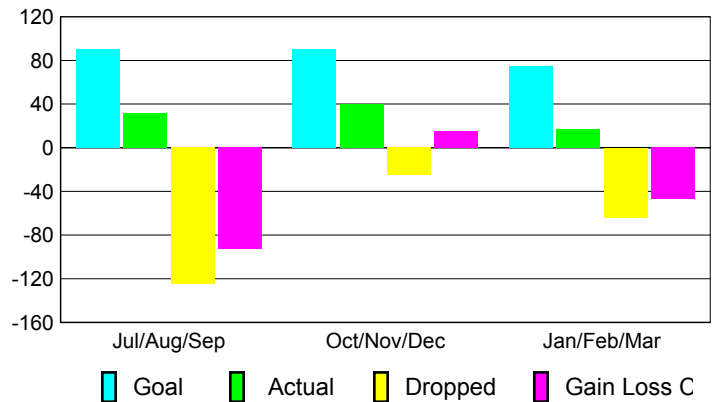
Membership Results
2009-2010

Membership
2008-2009

| Month | Net Memb | Actual New | Actual Dropped | Gain/Loss of | Gain/Loss of |
|---------------|------------|------------|----------------|--------------|--------------|
| | Goal | New Memb | Dropped Memb | Memb | Memb |
| Jul/Aug/Sep | 90 | 32 | -125 | -93 | -7 |
| Oct/Nov/Dec | 90 | 40 | -25 | 15 | -33 |
| Jan/Feb/Mar | 75 | 17 | -64 | -47 | -5 |
| Totals | 255 | 89 | -214 | -125 | -45 |

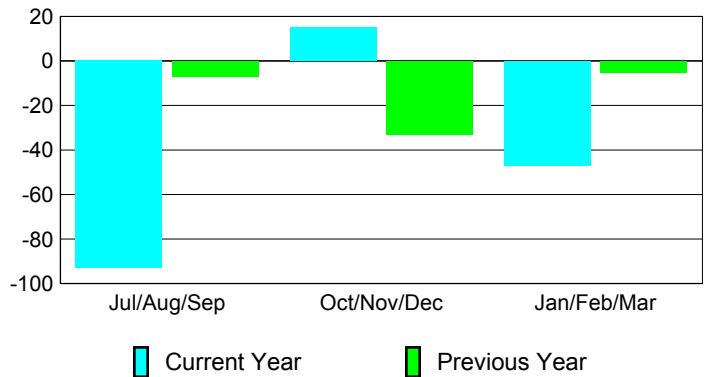
Membership Results 2009-2010

Goal, New, Dropped, Gain/Loss



Comparison of Membership Gain/Loss

Current Year Compared to the Previous Year



Gender Comparison 2009-2010

